

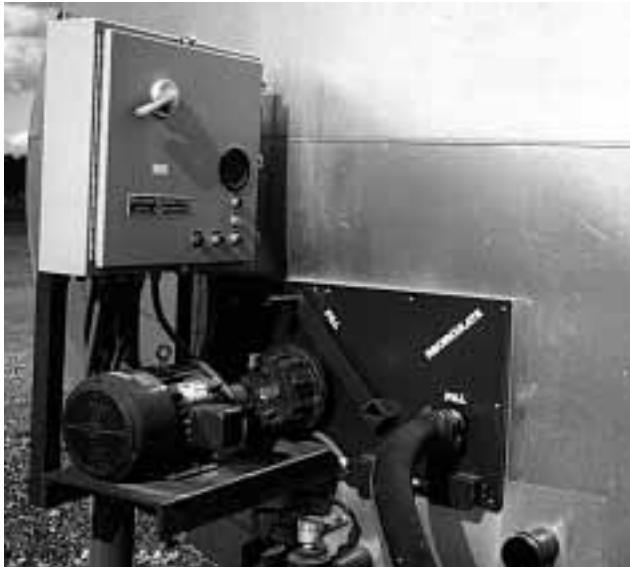


Serving Industry Since 1947

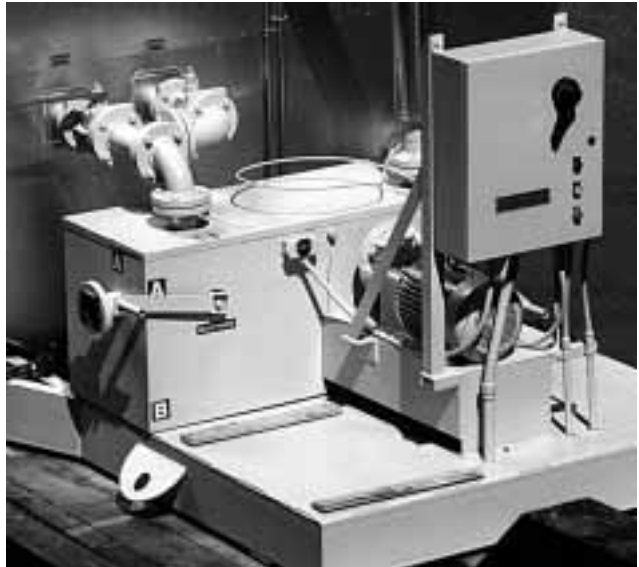
"Pump-in-Box" Heated Pumping Systems

If it's safe, reliable and efficient ... it must be PHCo

Internal



Free Standing



The PHCo "Pump-in-Box" is offered two ways. Both systems are heated to assure the pump and valves are always at the correct temperature and ready to operate. The complete assembly consists of either a gear reduction, or a direct-driven/positive displacement gear pump and valves, with heavy duty electric motor - all mounted on a common base which in turn is fitted into an enclosed insulated steel box with split, removable cover. The base-mounted driving motor is located outside the heated enclosure, away from the heat zone.

Internal:

The pumping unit can be fitted compactly into the head of the storage tank, making the PHCo internal "Pump-in-Box" an integral part of the tank.

Free Standing:

The free standing version can be mounted near the tank and plumbed back to the tank, making the PHCo free standing "Pump-in-Box" very versatile.

- Reversing switchgear and various valve arrangements can be furnished to accomplish needed requirements.
- Options for pumping from either single or multiple tanks to plant, from one tank to fill another, from truck transport or to distributor and draining the lines prior to shutdown.
- Pump and valves heated with adjustable thermostatic control.
- Sizes available range from 5 gpm up to 300 gpm.
- Operating temperatures up to 400 deg F.
- 240/480+575 Volt Single and Three Phase available.
- UL Listed controls mounted and wired to the systems operate the heaters and pumps with full overload protection on the motors.

**Process Heating
Company, Inc.**



2732 - 3rd Avenue South - Seattle, WA 98134
P.O. Box 84585 - Seattle, WA 98124
Phone: (206) 682-3414 FAX: (206) 682-1582
Email: inquire@processheating.com
Website: www.processheating.com